

---

## ***IQ Gateway power-up verification in IQ Combiner***

### **Contents**

Scope of this document.....1

Powering the IQ Gateway..... 2

Verify IQ Gateway has been powered on in IQ Combiner ..... 2

## Scope of this document

This document provides guidance to installers for validating the powering on of the IQ Gateway in an IQ Combiner.

Any reference to 'IQ Combiner' in this document refers to all generations of IQ Combiners including IQ Combiner 4/4C and later.

## Powering the IQ Gateway

The IQ Combiner does not ship with the IQ Gateway pre-wired to the IQ Gateway breaker. When commissioning a site, complete the wiring to ensure the IQ Gateway is powered.

- For a PV only system, power the IQ Gateway from the breaker pre-installed in the IQ Combiner.
- For a multi-mode system, power the IQ Gateway from the breaker in the IQ System Controller or from a backup load panel.

## Verify IQ Gateway has been powered on in IQ Combiner

During system commissioning, perform the following steps to validate the powering on of the IQ Gateway in an IQ Combiner.

1. Check if the wiring from the IQ Gateway to the IQ Gateway breaker is completed (either from the breaker in IQ Combiner or IQ System Controller/backup panel.



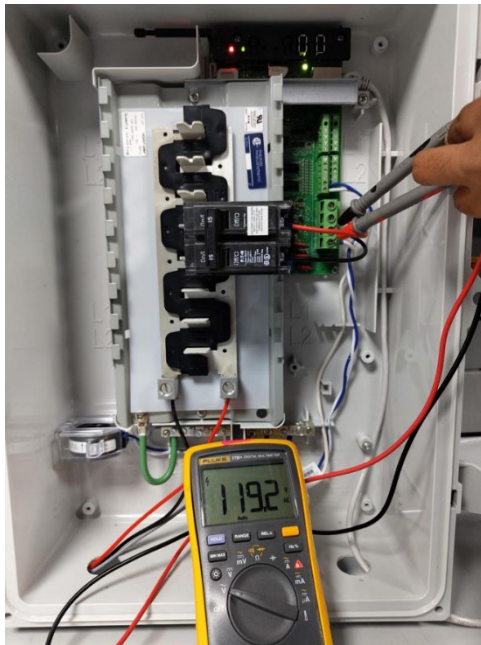
2. Check for a green LED light behind the USB ports.



**NOTE:** The LED may take up to 30 seconds to light up. Hence, it is recommended to wait 30 seconds after the IQ Gateway has been powered to perform this validation.



3. Validate the voltage across the IQ Gateway's power terminals. When the IQ Gateway has been correctly powered on, there will be a voltage of 120 V( $\pm 10\%$  across N and L1) and 24 0V( $\pm 10\%$  across L1 and L2).





## Revision history

Revision	Date	Description
Rev 1	March 2023	Initial release