

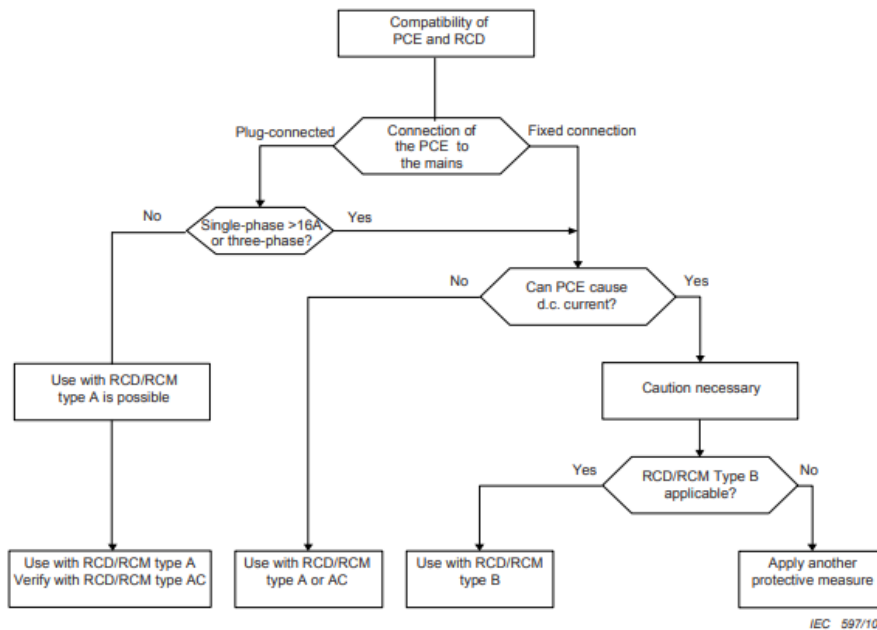
**Manufacturer**  
 Enphase Energy, Inc.  
 47281 Bayside Pkwy.  
 Fremont, CA 94538  
 UNITED STATES of AMERICA,  
 PH: +1 707-763-4784

**Importer**  
 Enphase Energy NL B.V.  
 Het Zuiderkruis 65,  
 5215 MV, 's-Hertogenbosch  
 The Netherlands,  
 PH: +31 73 3035859

## IQ GATEWAY - RCD TECHNICAL NOTE

The Enphase IQ Gateway is intended to be installed as an integral part of an Enphase generation system. As per EN IEC 60364-7, section 712.530.3.101, Enphase microinverters and AC coupled storage products are in accordance with EN IEC 62109-1, section 7.3.8 (Residual Current Detection (RCD) or Monitoring (RCM) device compatibility), and withstand requirements described in IEC 60755 and IEC 62020 related to type A RCD and type AC RCD.

For the selection of an RCD, refer to Figure E.1 from EN IEC 62109-1 Annex E



**Figure E.1 – Flow chart leading to selection of the RCD/RCM type upstream of a PCE**

As the IQ Gateway is part of the PCE, it shall be installed within the PCE RCD protected circuit. All IQ Microinverters and AC coupled storage products are compatible with RCD type A and type AC protection as well as RCD type B.

---

## IQ GATEWAY – CLEANING CONSIDERATIONS

The IQ Gateway is intended to be installed in a restricted access area such as a switchboard with other electrical equipment. The installation area should be dry and relatively dust free to ensure a long service life without regular cleaning.

Should the IQ Battery need to be cleaned, this should only be performed by a person qualified to work with similar electrical equipment in accordance with local regulations.