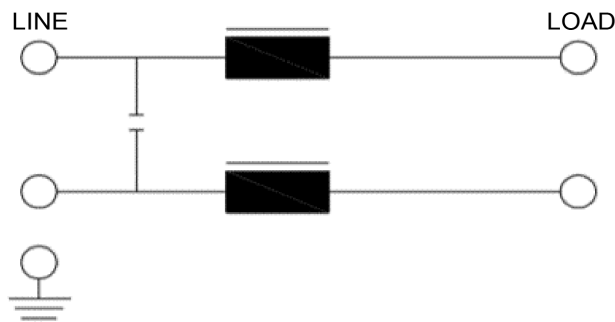


## Power Line Filter Q-LCF-064-1P

In residential applications, the Power Line Filter Q-LCF-064-1P, manufactured by Radius Power, separates power line communication (PLC) domains across the Enphase microinverter installation when multiple IQ Gateways are located on a single utility transformer or when site loads generate electrical noise that disrupts communications. Suitable for use with M Series, S Series, IQ6, IQ7, and IQ8 Series Microinverters.

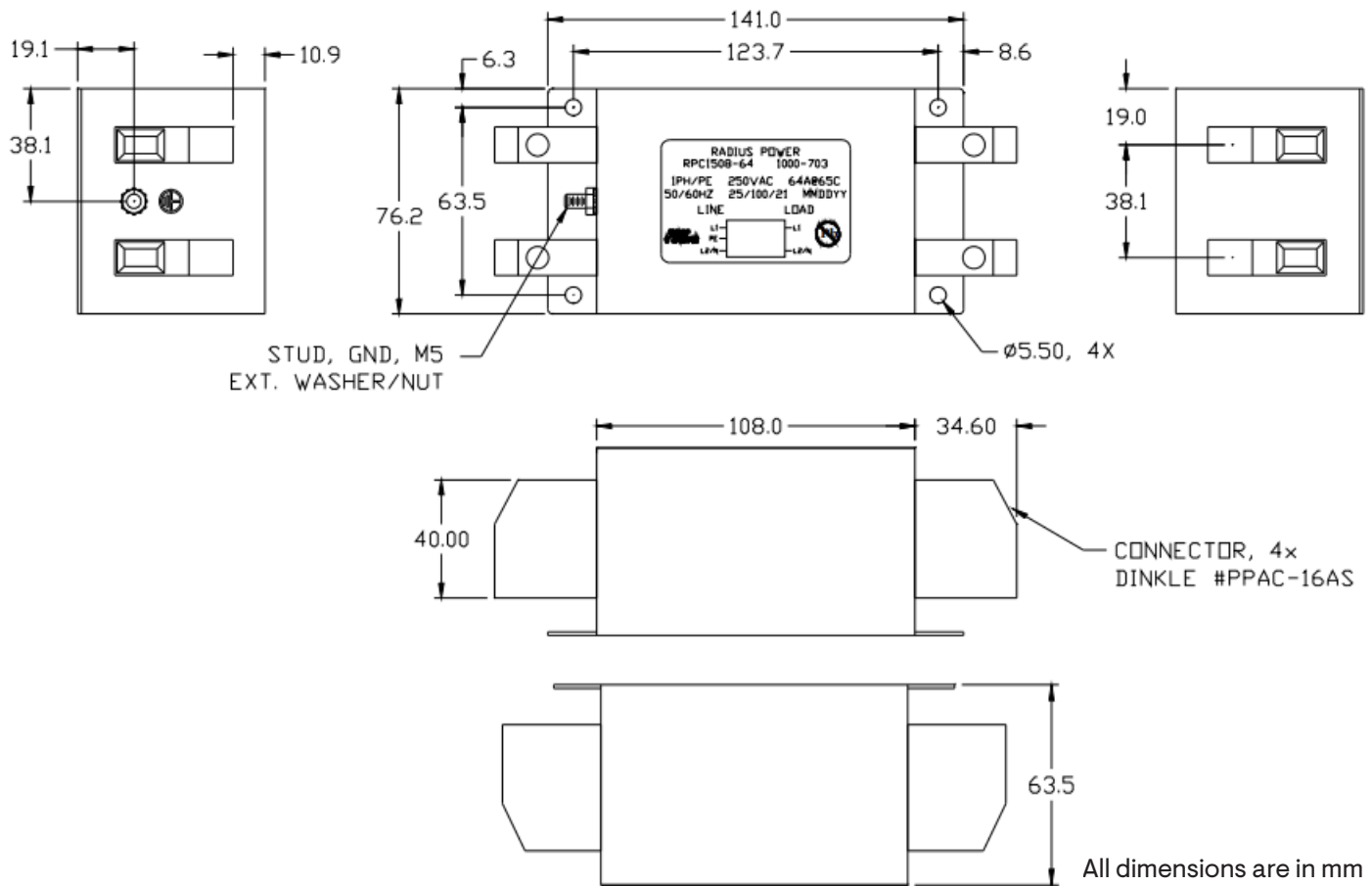
### Schematic



Connect both Enphase IQ Gateway and Enphase microinverters on the array or load side of the filter and wire the utility feed to the line side of the filter.

# Power Line Filter

MODEL NUMBER	
Q-LCF-064-1P	Single line communication filter, 64 A, suitable for use with M Series, S Series, IQ6, IQ7, and IQ8 Series Microinverters
SPECIFICATIONS	
Maximum current per line	64 A (temperature adjusted to 65°C)
Maximum voltage	250 VAC + 10%
Frequency	50/60 Hz
Power dissipation	25 W max (current dependent)
Ambient temperature range	-40°C to 65°C (-40°F to 149°F)
Weight	1.5 kg (3.30 lbs)
Dimensions	141 mm × 76.2 mm × 63.5 mm (5.55" × 3.00" × 2.5")
RoHS/Safety	Yes/cURus, EN60939
Terminal style/size	PPAC-16AS



- Recommended conductor size for 64 A continuous is AWG 7/0.
- Mount in an appropriate enclosure using the mounting holes.

To learn more about Enphase offerings, visit [enphase.com](https://enphase.com)

# Revision history

REVISION	DATE	DESCRIPTION
DSH-00043-1.0	May 2023	Initial release