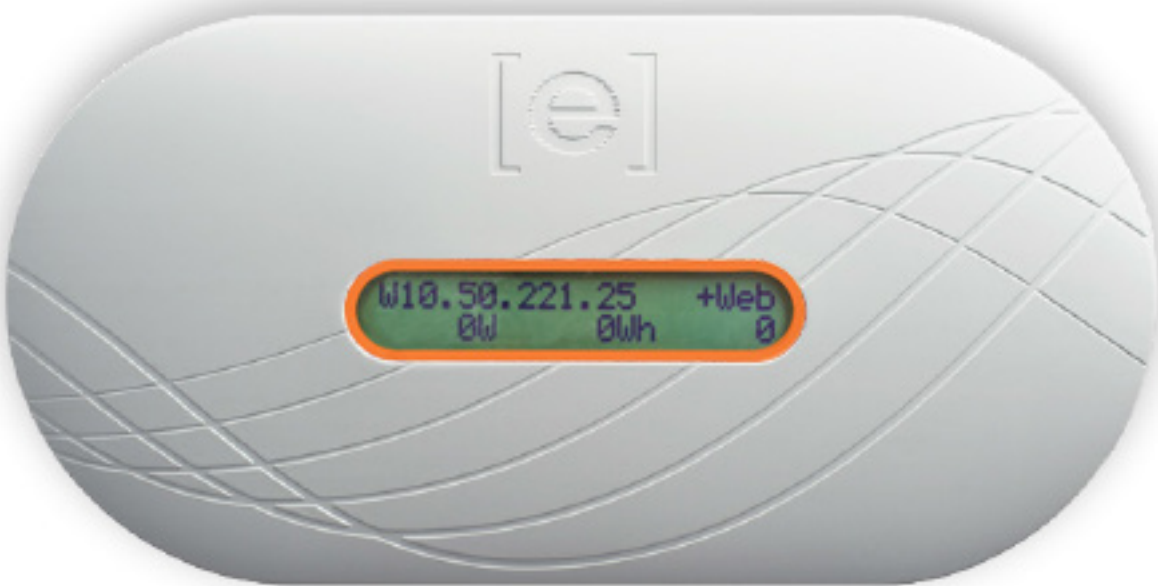


This product is no longer sold by Enphase, though it may be offered by distributors or installers.

Enphase **Networking**

# Enphase® **Envoy**® Communications Gateway™



The Enphase **Envoy**® **Communications Gateway** provides network access to the solar array enabling comprehensive monitoring and management of an Enphase system.

Solar professionals and system owners can easily check the status of their Enphase System using the Envoy's LCD display or get more detailed performance data via Enlighten® Software, included with purchase of Envoy.

## **SMART**

- Includes web-based monitoring and control
- Integrates with smart energy devices
- Automatically upgrades and sends performance data

## **SIMPLE**

- Plug and play installation
- Flexible network configuration
- No additional AC wiring required

## **SCALABLE**

- Residential or commercial ready out of the box
- Supports up to 600 microinverters

Enphase **Envoy** Communications Gateway // DATA**INTERFACE**

Power line communications	Enphase proprietary
Local area network (LAN)	10/100 auto-sensing, auto-negotiating
USB	USB 2.0 interface, auto-sensing, auto-negotiation, 802.3

**CAPACITY**

Number of devices polled	Monitors up to 600 Enphase Microinverters
--------------------------	---

**LAN CONNECTION OPTIONS**

Cable assembly, Ethernet, RJ45, orange, 3m	Included with all models
Power line communication bridge pair	Order EPLC-02 (EU), EPLC-03 (UK) or EPLC-04 (AU) separately
Wireless N USB adapter (802.11b/g/n)	Order WF-01 separately

**POWER REQUIREMENTS**

AC supply	230 VAC, 50 Hz
Power consumption	2.5 watts typical, 7 watts maximum

**MECHANICAL DATA**

Dimensions (WxHxD)	222.5 mm x 112 mm x 43.2 mm (8.8" x 4.4" x 1.7")
Weight	340 g (12 oz.)
Ambient temperature range	-40°C to +65°C (-40° to 149°F)
Cooling	Natural convection—no fans
Enclosure environmental rating	Indoor NEMA 1
Metering accuracy	Qualified at +/- 5% or better

**FEATURES**

Standard warranty term	Two years
Compliance	EN 60950-1, EN 55022 Class B, EN 55024, EN 50065-1, EN 50065-2-2, EN 61000-3-2, EN 61000-3-3
API available	System-level production data

To learn more about Enphase Microinverter technology, visit [enphase.com](http://enphase.com).