

Enphase IQ Terminator (single-phase) quick install guide

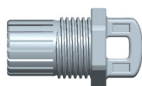
Use the Enphase IQ Terminator (Q-TERM-R-10) to seal unused cable ends. It is sold in packs of ten.

For full installation instructions for the Enphase IQ Series Microinverters, read and follow all warnings and instructions in this guide and in the *Microinverter Installation and Operation Manual* at: <https://enphase.com/en-gb/installers/resources/documentation>. Safety warnings are listed to the right of this guide.

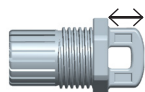
Terminating unused ends of IQ Cable

A) Remove 13 mm of the cable sheath from the conductors. Use the terminator loop to measure.

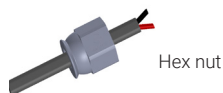
Terminator body



13 mm

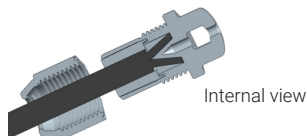


B) Slide the hex nut onto the cable.



Hex nut

C) Insert the cable into the terminator body so that each of the two wires land on opposite sides of the internal separator. There is a grommet inside of the terminator body that should remain in place.

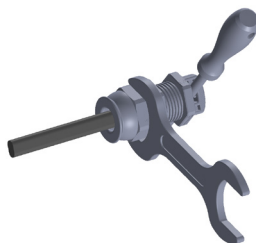


Internal view

D) Insert a screwdriver into the slot on the top of the terminator to hold it in place, and torque the hex nut to 7 N m.

NOTE: Hold the terminator body stationary with the screwdriver and turn only the hex nut to prevent the conductors from twisting out of the separator.

E) Attach the terminated cable end to the PV racking with a cable clip or tie wrap so that the cable and terminator do not touch the roof.



WARNING: The terminator cannot be re-used. If you unscrew the nut, you must discard the terminator.



140-00113-02

ENPHASE

© 2023 Enphase Energy. All rights reserved. Enphase, the e and CC logos, IQ, and certain other marks listed at <https://enphase.com/trademark-usage-guidelines> are trademarks of Enphase Energy, Inc. in the US and other countries. Data subject to change. Rev02/06-29-2023

SAFETY

IMPORTANT SAFETY INSTRUCTIONS. SAVE THIS INFORMATION.

This guide contains important instructions to follow during installation.

Safety Symbols

	DANGER: This indicates a hazardous situation, which if not avoided, will result in death or serious injury.
	WARNING: This indicates a situation where failure to follow instructions may be a safety hazard or cause equipment malfunction. Use extreme caution and follow instructions carefully.
	NOTE: This indicates information particularly important for optimal system operation.

Safety Instructions

	DANGER: Risk of electric shock. Do not use Enphase equipment in a manner not specified by the manufacturer. Doing so may cause death or injury to persons, or damage to equipment.
	DANGER: Risk of electric shock. Be aware that installation of this equipment includes risk of electric shock.
	DANGER: Risk of electric shock. Always de-energize the AC branch circuit before servicing. Never disconnect the DC connectors under load.
	DANGER: Risk of electric shock. Risk of fire. Only use electrical system components approved for wet locations.
	DANGER: Risk of electric shock. Risk of fire. Only qualified personnel should troubleshoot, install, or replace Enphase microinverters or the IQ Cable and accessories.
	DANGER: Risk of electric shock. Do not install the IQ Terminator while the power is connected.
	DANGER: Risk of electric shock. Risk of fire. When stripping the sheath from the IQ Cable, make sure the conductors are not damaged. If the exposed wires are damaged, the system may not function properly.
	WARNING: Before installing or using the Enphase microinverter, read all instructions and cautionary markings in the technical description, on the Enphase microinverter system, and on the photovoltaic (PV) equipment.
	WARNING: Use a terminator only once. If you open the terminator following installation, the latching mechanism is destroyed. If the latching mechanism is defective, do not use the terminator. Do not circumvent or manipulate the latching mechanism.
	WARNING: When installing the IQ Cable, secure any loose cable to minimize tripping hazard.
	NOTE: To ensure optimal reliability and to meet warranty requirements, install the cable terminator according to the instructions in this guide.

Safety Instructions Continued

	NOTE: Maintenance and cleaning must be performed by qualified personnel.
	NOTE: Perform all electrical installations in accordance with all applicable local electrical codes.
	NOTE: When looping the IQ Cable, do not form loops smaller than 12 cm in diameter.
	NOTE: When installing the IQ Cable and accessories, adhere to the following: <ul style="list-style-type: none">• Do not expose the terminator or cable connections to directed, pressurized liquid (water jets, etc.).• Do not expose the terminator or cable connections to continuous immersion.• Do not expose the terminator or cable connections to continuous tension (e.g., tension due to pulling or bending the cable near the connection).• Use only the connectors and cables provided.• Do not allow contamination or debris in the connectors.• Use the terminator and cable connections only when all parts are present and intact.• Do not install or use in potentially explosive environments.• Do not allow the terminator to come into contact with an open flame.• Fit the terminator using only the prescribed tools and in the prescribed manner.• Use the terminator to seal the conductor end of the IQ Cable; no other method is allowed.

Note for third-party products:

Any third-party manufacturer or importer product(s) used to install or commission Enphase product(s) shall comply with the applicable EU Directive(s) and requirements in the EEA (European Economic Area). It is the responsibility of the installer to confirm that all such products are labelled correctly and have the required compliant supporting documentation.

Compliance with EU Directives

This product complies with the following EU Directives and can be used in the European Union without any restrictions.

- Low Voltage Directive (LVD) 2014/35/EU
- Restriction of Hazardous Substances (RoHS) 2011/65/EU

The full text of the EU declaration of conformity (DoC) is available at <https://enphase.com/en-gb/installers/resources/documentation>.

Manufacturer: Enphase Energy Inc.,

47281 Bayside Pkwy, Fremont, CA, 94538,
The United States of America, PH: +1 (707) 763-4784.

Importer: Enphase Energy NL B.V.,

Het Zuiderkruis 65, 5215MV, 's-Hertogenbosch,
The Netherlands, PH: +31 73 3035859.

Enphase customer support: <https://enphase.com/contact/support>

Revision history

REVISION	DATE	DESCRIPTION
140-00113-02	June 2023	Updated the document for product names and editorial changes.