

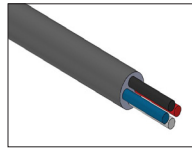
Enphase QD Terminator

Terminating the end of the QD Cable

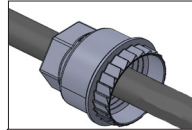
Use the Enphase QD Terminator (QD-TERM-10) to seal unused QD Cable ends. It is sold in packs of ten.

For full installation instructions for the Enphase IQ Series Microinverters, read and follow all warnings and instructions in this guide and in the *IQ8 Commercial Microinverter grid-tied PV System Design Guide* at: enphase.com/support. Safety warnings are listed to the right of this guide.

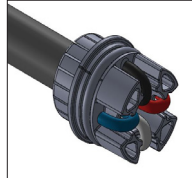
A) Remove 20 mm of the cable sheath from the conductors.



B) Slide the hex nut onto the cable. The grommet inside the terminator body must remain in place.

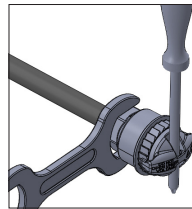


C) Insert the cable into the terminator body so that the four wires land on separate sides of the internal separator.



D) To attach the cap:

- Bend the wires down into the recesses of the terminator body and trim as needed. Place the cap over the terminator body.
- Insert a screwdriver into the slot on the terminator cap to hold it in place.
- Rotate the hex nut with your hand or a wrench until the latching mechanism meets the base.
- Do not over-torque.



E) Attach the terminated cable end to the PV racking with a cable clip or tie wrap so that the cable and terminator do not touch the roof.



WARNING: The terminator cannot be re-used. If you unscrew the nut, you must discard the terminator.

Revision history

REVISION	DATE	DESCRIPTION
140-00198-02	November 2023	Editorial updates
140-00198-01	February 2023	Initial release

© 2023 Enphase Energy. All rights reserved. Enphase, the e and CC logos, IQ, and certain other marks listed at <https://enphase.com/trademark-usage-guidelines> are trademarks of Enphase Energy, Inc. in the US and other countries. Data subject to change. 2023-10-31

SAFETY

IMPORTANT SAFETY INSTRUCTIONS. SAVE THIS INFORMATION.

This guide contains important instructions to follow during installation.

Safety symbols

	DANGER: This indicates a hazardous situation, which if not avoided, will result in death or serious injury.
	WARNING: This indicates a situation where failure to follow instructions may be a safety hazard or cause equipment malfunction. Use extreme caution and follow instructions carefully.
	NOTE: This indicates information particularly important for optimal system operation.

Safety instructions

	DANGER: Risk of electric shock. Do not use Enphase equipment in a manner not specified by the manufacturer. Doing so may cause death or injury to persons or damage to equipment.
	DANGER: Risk of electric shock. Be aware that installation of this equipment includes a risk of electric shock.
	DANGER: Risk of electric shock. Always de-energize the AC branch circuit before servicing. Never disconnect the DC connectors under load.
	DANGER: Risk of electric shock. Risk of fire. Only use electrical system components approved for wet locations.
	DANGER: Risk of electric shock. Risk of fire. Only qualified personnel should troubleshoot, install, or replace Enphase microinverters or the Enphase QD Cable and Accessories.
	DANGER: Risk of electric shock. Do not install the Enphase QD Terminator while the power is connected.
	DANGER: Risk of electric shock. Risk of fire. When stripping the sheath from the Enphase QD Cable, make sure the conductors are not damaged. If the exposed wires are damaged, the system may not function properly.
	WARNING: Before installing or using the Enphase microinverter, read all instructions and cautionary markings in the technical description, on the Enphase microinverter, and on the photovoltaic (PV) equipment.

Safety instructions continued

	WARNING: Use the terminator only once. If you open the terminator following installation, the latching mechanism is destroyed. If the latching mechanism is defective, do not use the terminator. Do not circumvent or manipulate the latching mechanism.
	WARNING: When installing the Enphase QD Cable, secure any loose cable to minimize tripping hazard.
	NOTE: To ensure optimal reliability and to meet warranty requirements, install the QD Terminator according to the instructions in this guide.
	NOTE: Perform all electrical installations in accordance with all applicable local electrical codes.
	NOTE: When looping the Enphase QD Cable, do not form loops smaller than 12 cm in diameter.
	NOTE: When installing the Enphase QD Cable and accessories, adhere to the following: <ul style="list-style-type: none"> • Do not expose the terminator or cable connections to directed, pressurized liquid (water jets, and so on). • Do not expose the terminator or cable connections to continuous immersion. • Do not expose the terminator or cable connections to continuous tension (for example, tension due to pulling or bending the cable near the connection). • Use only the connectors and cables provided. • Do not allow contamination or debris in the connectors. • Use the terminator and cable connections only when all parts are present and intact. • Do not install or use in potentially explosive environments. • Do not allow the terminator to come into contact with open flame. • Fit the terminator using only the prescribed tools and in the prescribed manner. • Use the terminator to seal the conductor end of the Enphase QD Cable; no other method is allowed.



140-00198-02

Enphase Support: <https://enphase.com/contact/support>